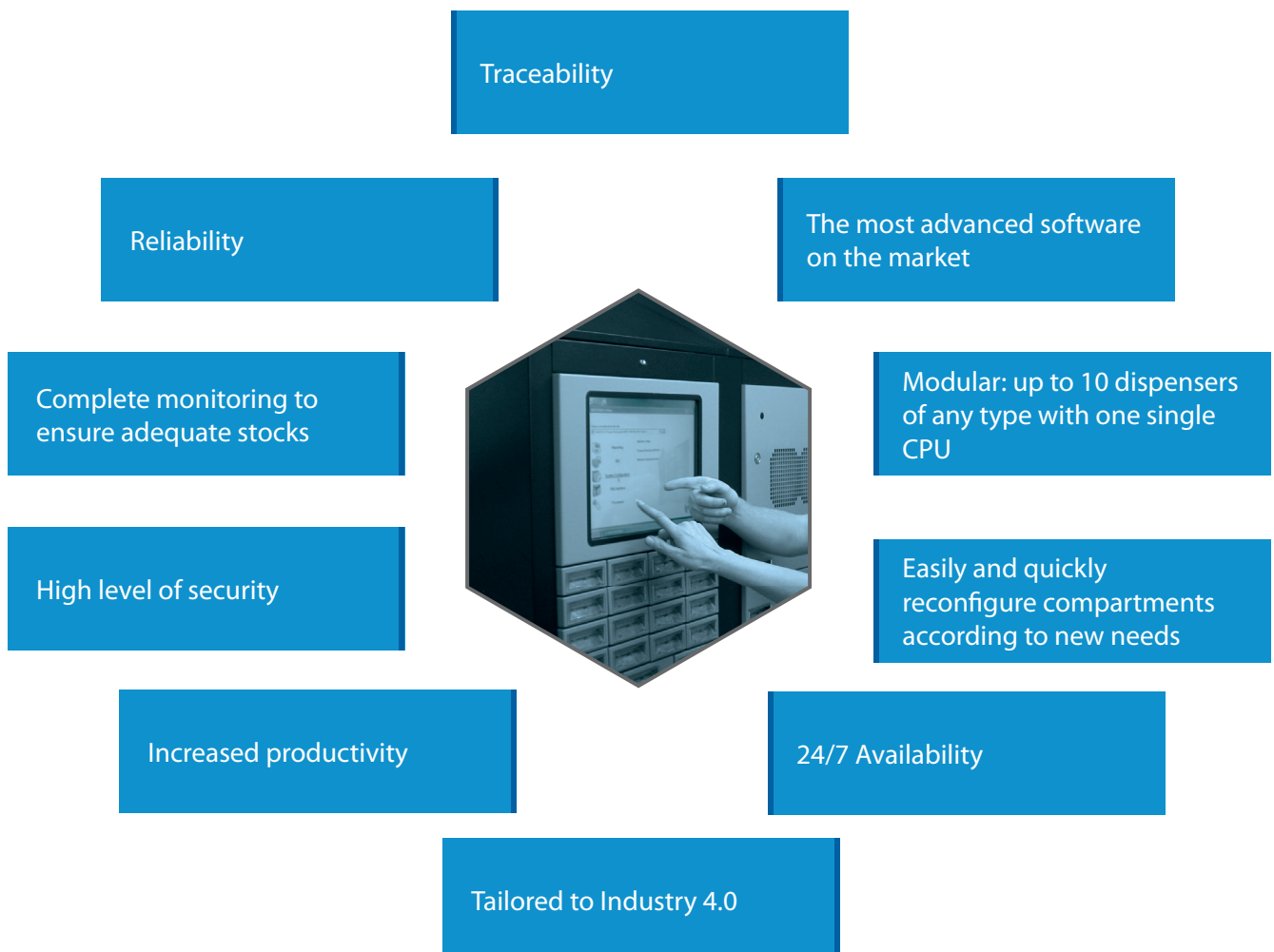




Smart *Vending*

OSG Smart Vending (OSV) manages your cutting tool and consumables inventory and drastically reduces material purchasing with savings of at least 15%

■ WHAT DOES SMART VENDING HAVE TO OFFER?



OUR MAIN MODELS



• Module



• RotoPoint



• ECTC



• 28 Levels

ROTOPOINT

- Rotating dispenser.
- Very profitable for high- and low-turnover items.
- Ideal for all types of consumables.
- High capacity.
- Robust.
- Maximum security in item management.
- Easy reconfiguration.
- Optional removable drawers.



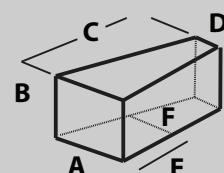
Dimensions:

- 1,030 mm x 1,030 mm x 2,010 mm
- Up to 468 bins

Type of dispenser	Levels	Drawers	Total bins	Door width	Max. dispenser weight
2	5	18	90	160x260	390
3	5	36	180	80x260	390
4	7	18	126	160x175	390
5	7	36	252	80x175	400
6	13	36	468	80x80	470
7	13	18	234	160x80	450

T	A	B	C	D	E	F
2	160	260	290	90	140	112
3	80	260	290	30	140	55
4	160	175	290	60	140	112
5	80	175	290	30	140	55
6	80	80	290	30	140	55
7	160	80	290	60		

Size of bins in mm



28 LEVELS

- Very versatile.
- For management in any industry.
- Flexible.
- Easily configurable.
- Expandable.
- Opens gradually and sequentially.



Dimensions:

- 510 mm x 545 mm x 2,000 mm
- Up to 1,345 bins

Type of dispenser	Type	Levels	Drawers	Bins
Dispenser Master (with CPU)	Master	26	104	1,248
Add. dispenser	Slave	28	113	1,345

- Drawer configuration with 1, 2, 3, 4, 6 or 12 bins.

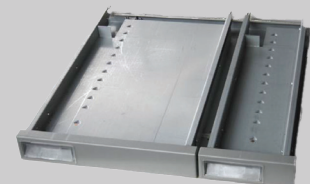
Number of bins in the drawer	1	2	3	4	6	12
Depth of each bin in mm	336	166	111	82	54	25

Configurations

Z	Z	Z	Z
A	A	A	A
AA			A
B	B		B
BB			B
C			C
D			D
Twin 4	Twin 4	Twin 4	Twin 4
Twin 3	Twin 3		Twin 3
Twin 2			Twin 2
E			
F			
G			
H			
J			J

Drawer dimensions

Drawer type	Bins	Levels	Inside dim. (mm)	Max. weight
Z	4	1	55x23	20
A	3	1	97 x 23	20
AA	2	1	250 x 23 97 x 23	20
B	3	2	97 x 68	20
BB	2	2	250 x 68 97 x 68	20
C	2	1	164 x 23	20
D	2	2	175 x 68	20
Twin 4	4	1,5*	59 x 49	20
Twin 3	3	1,5*	97 x 49	20
Twin 2	2	1,5*	176 x 49	20
E	1	1	385 x 23	20
F	1	1	394 x 68	35
G	1	3	394 x 120	35
H	1	4	394 x 175	35
J	2	4	170 x 175	35



* Use twin bins as pair

MODULE

- With pioneering technology.
- High capacity at a very competitive price.
- Compartments to individually manage items (with or without a case).
- Expandable.
- Very secure.
- Opens gradually and sequentially.



Dimensions:

- 510 mm x 545 mm x 2,000 mm
- Up to 120 configurable drawers with 1, 2, 3, 4, 6 or 12 bins
Up to a maximum of 1,440 bins

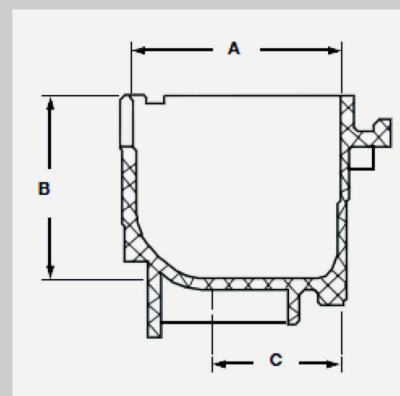
Type of module	A (in mm)	B (in mm)	C (in mm)	Bins per module
1x1	47.5	41.5	29	24
2x1	120	41.5	118	12
3x1	193	41.5	175	8
2x2	120	94	96	6
3x2	194	94	181	4

Configuration

Electronic cabinet with 6 levels					
1x1	1x1	1x1	1x1	1x1	1x1
1x1	1x1	1x1	1x1	1x1	1x1
1x1	1x1	1x1	1x1	1x1	1x1
1x1	1x1	1x1	1x1	1x1	1x1
2x1	2x1	2x1	2x1	2x1	2x1
2x1	2x1	2x1	2x1	2x1	2x1
2x1	2x1	2x1	2x1	2x1	2x1
2x1	2x1	2x1	2x1	2x1	2x1
3x1	3x1	3x1	3x1	3x1	3x1
3x1	3x1	3x1	3x1	3x1	3x1
3x1	3x1	3x1	3x1	3x1	3x1
3x1	3x1	3x1	3x1	3x1	3x1
2x2	2x2	2x2	2x2	2x2	2x2
2x2	2x2	2x2	2x2	2x2	2x2
3x2	3x2	3x2	3x2	3x2	3x2
3x2	3x2	3x2	3x2	3x2	3x2
3x2	3x2	3x2	3x2	3x2	3x2

Bins dimensions

Type of module	A mm	B mm	C mm	Drawers per section
1x1	47,5	41,5	29	24
2x1	120	41,5	118	12
3x1	193	41,5	175	8
2x2	120	94	96	6
3x2	194	94	181	4



- Max. 4 drawers per section
- Weight per drawer 5kg

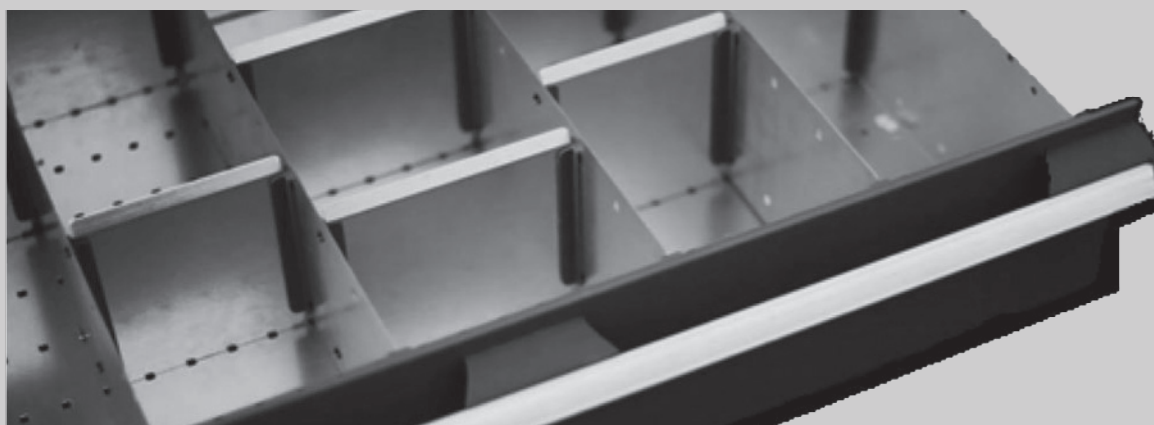
- For storing all types of equipment and tools.
- Six different configurations.
- Compact and sturdy.
- Affordable: quick return on investment.
- Expandable and very versatile.
- Electronically controlled drawer closure.



Dimensions:

- 1,000 mm x 800 mm x 750 mm - Types 1 and 2
- 1,200 mm x 800 mm x 750 mm - Types 3 to 6

Type of dispenser	Height of dispenser	Drawer height 75 mm	Drawer height 100 mm	Drawer height 150 mm	Drawer height 300 mm
Type 1	1,000	-	9	-	-
Type 2	1,000	2	6	1	-
Type 3	1,200	-	11	-	-
Type 4	1,200	2	5	1	1
Type 5	1,200	-	8	2	-
Type 6	1,200	4	5	2	-



INSTALLATION EXAMPLE

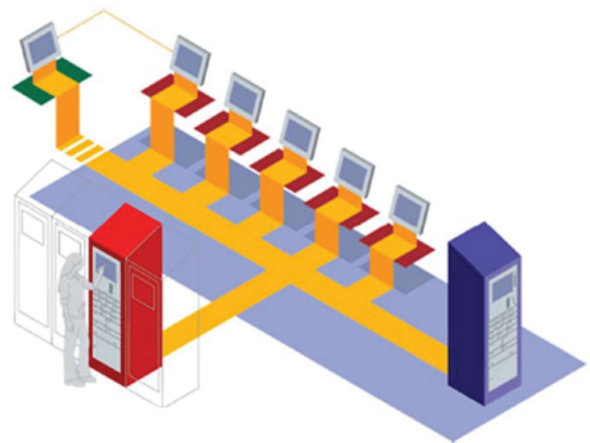
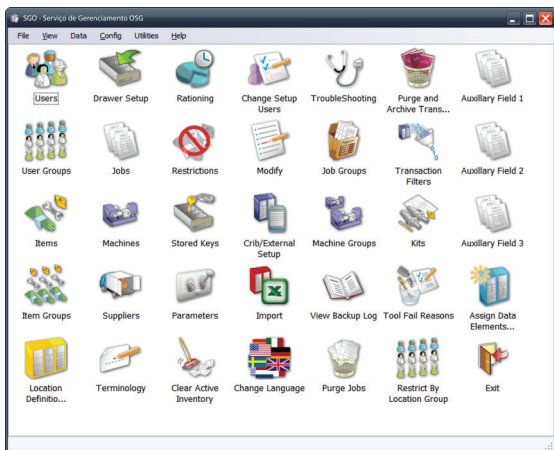
Demo installation consisting of three dispenser models:

- 1 Rotopoint Master
- 1 28 levels (add)
- 1 ECTC (add)



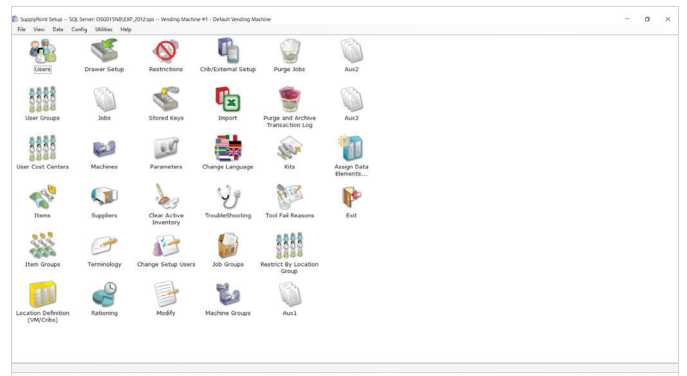
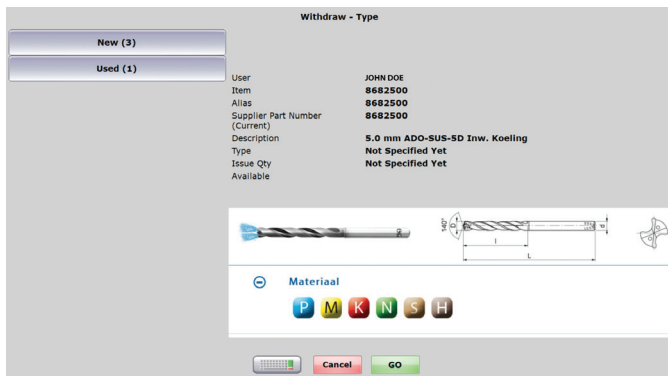
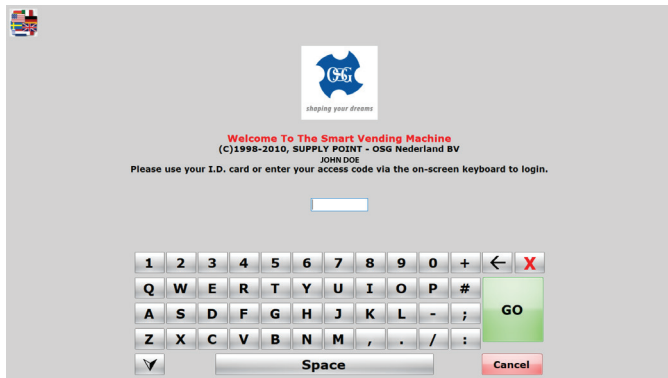
OSV SOFTWARE

- Complete package of features that can be activated or deactivated based on current usage needs.
- Absolute oversight.
- Powerful software.
- Management of all kinds of materials.
- Intuitive interface that minimizes errors.
- Easy to use, both for users and for administrators.
- Easy to learn.
- Totally open and configurable.
- Real-time usage data.
- Extensive set of fully customizable reports.
- Various languages according to user preferences.
- Can be integrated into the customer's ERP.
- Can be integrated into network access control systems.
- Simple or multiple installation management with a single PC.
- Can also connect between different plants.



OSV SOFTWARE

- FIFO control.
- Item weighing.
- Kit management, loose or assembled.
- Expirations.
- Gage management.
- Rationing.
- External stock monitoring.
- Key management.
- Incident control.
- Test control.



Order Requirement Below Capacity

Item	Item Description	Item Group	Supplier Part Number	Supplier Number	Supplier Description	Unit Cost	Qty on Order
123	Loop		Loop	0001	OSG Nederland BV	€ 10,00	0
455205050500	TR-ELETTA 50 MHD'S		455205050500	0005	D'Andrea	€ 1,100,00	0
48139105	A-SFT M6 Blind	Tappen	48139105	0001	OSG Nederland BV	€ 2,20,00	0
48139108	A-SFT M8 Blind	Tappen	48139108	0001	OSG Nederland BV	€ 3,20,00	0
48145155	A-POT M6 Doorlopend Tappen	Tappen	48145155	0001	OSG Nederland BV	€ 2,40,00	0
48145161	A-POT M8 Doorlopend Tappen	Tappen	48145161	0001	OSG Nederland BV	€ 2,50,00	0
8682500	5.0 mm ADO-SUS-SD		8682500	0001	OSG Nederland BV	€ 86,40	0
8682680	6.8 mm ADO-SUS-SD		8682680	0001	OSG Nederland BV	€ 107,60	0

Transaction History - All Transactions

Transaction Date - Time	Item	Item Description	User Name	Qty
5-3-2018 06:45:53	455205050500	TR-ELETTA 50 MHD'S	Jan	1
5-3-2018 06:52:27	48139155	A-SFT M6 Blind	Jan	0
5-3-2018 13:17:19	8682680	6.8 mm ADO-SUS-SD Inw. KoeJan	Jan	1
5-3-2018 13:19:04	8682680	6.8 mm ADO-SUS-SD Inw. KoeJan	Jan	1
9-3-2018 11:06:52	48145155	A-POT M6 Doorlopend	Jan	1
9-3-2018 11:07:04	8682500	5.0 mm ADO-SUS-SD Inw. KoeJan	Jan	1
9-3-2018 14:04:15	8682500	5.0 mm ADO-SUS-SD Inw. KoeJan	Jan	1
14-3-2018 13:51:42	48139105	A-SFT M6 Blind	Jan	0
15-3-2018 00:04:05	48139108	A-SFT M8 Blind	Jan	2
15-3-2018 00:05:05	48139155	A-SFT M6 Blind	Wouter	0
15-3-2018 00:06:21	8682500	5.0 mm ADO-SUS-SD Inw. KoeWouter	Wouter	2
15-3-2018 00:06:41	8682680	6.8 mm ADO-SUS-SD Inw. KoeWouter	Wouter	2
15-3-2018 00:07:13	48145161	A-POT M8 Doorlopend	Wouter	1
15-3-2018 00:09:27	48145161	A-POT M8 Doorlopend	Wouter	1
19-6-2018 12:36:23	48139108	A-SFT M8 Blind	Jan	1
3-7-2018 14:02:47	48139155	A-SFT M6 Blind	Jan	0
3-7-2018 14:03:17	48139155	A-SFT M6 Blind	Jan	0
3-7-2018 14:03:59	8682500	5.0 mm ADO-SUS-SD Inw. KoeJan	Jan	1
26-7-2018 13:10:22	48139155	A-SFT M6 Blind	Jan	0
6-9-2018 14:07:32	48139188	A-SFT M8 Blind	Jan	1

GETTING STARTED

The fastest way to obtain a return on investment is to automate the management of tools and other high- and medium-turnover consumables. However, it will also depend on the organization and streamlining, along with the number of cabinets that are needed.

The software allows you to manage external cabinets and stocks using the key stored in the automated dispenser. While transitioning, this method allows for using older material and streamlining the number of product SKUs, for example, by avoiding having boxes of plates from various brands for the same job.

In addition to saving on purchases, there are also intangible values:

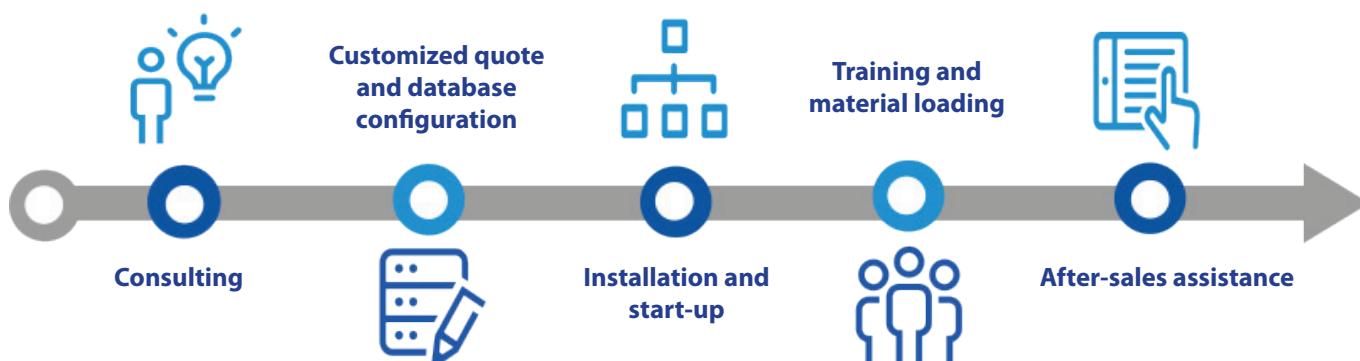
- few or no emergencies;
- no excessive and unmonitored stock;
- save on hidden costs due to time lost on preparation or restocking machines;
- improve internal discipline;

■ PRELIMINARY INFORMATION REQUIRED TO PROVIDE A QUOTE

Before we can conduct a preliminary study and provide the most appropriate solution, we need to know the following:

- number of different product SKUs;
- package dimensions;
- number of packages per compartment;

With this information and, thanks to the modularity of the dispensers, we can find a solution that is tailored to every situation and that can be expanded at any time.





shaping your dreams

OSG EUROPE LOGISTICS

Avenue Lavoisier 1
B-1300 Z.I. Wavre - Nord - Belgium
Tel: +32 10 23 05 07
Fax: +32 10 23 05 51
info@osgeurope.com

OSG BELUX

Avenue Lavoisier 1
B-1300 Z.I. Wavre - Nord - Belgium
Tel: +32 10 23 05 11
Fax: +32 10 23 05 31
info@osg-belgium.com

OSG FRANCE

Parc Icade, Paris Nord 2
Immeuble "Le Rimbaud"
22 Avenue des Nations
CS66191 - 93420 Villepinte - France
Tel: +33 1 49 90 10 10
Fax: +33 1 49 90 10 15
sales@osg-france.com

OSG NETHERLANDS

Bedrijfsweg 5 - 3481 MG Harmelen
Tel: +31 348 44 2764
Fax: +31 348 44 2144
info@osg-nl.com

OSG UK

Shelton house, 5 Bentalls
Pipps Hill Ind Est, Basildon Essex SS14 3BY
Tel: +44 1268 567 660
Fax: +44 1268 567 661
uk_sales@osg-uk.com

CZECH, SLOVAKIA, HUNGARY

OSG Europe Logistics S.A.
Slovakia organizacna zlozka
Racianská 22/A, SK-83102 Bratislava
Slovakia
Tel. +421 24 32 91 295
Orders-osgsvk@osgeurope.com

OSG POLAND Sp. z.o.o.

Spółdzielcza 57
05-074 Halinów - Poland
Tel: +22 760 82 71
Fax: +22 760 82 71
osg@osg-poland.com

OSG GERMANY

Karl-Ehmann-Str. 25
D - 73037 Göppingen - Germany
Tel: +49 7161 6064 - 0
Fax: +49 7161 6064 - 444
info@osg-germany.de

OSG SCANDINAVIA

(For Scandinavian countries)
Langebjergvaenget 16
4000 Roskilde - Denmark
Tel: +45 46 75 65 55
Fax: +45 46 75 67 00
osg@osg-scandinavia.com

SWEDEN

Branch office of OSG SCANDINAVIA
Singelgatan 7
212 28 Malmö - Sweden
Tel: +46 40 41 22 55
osg@osg-scandinavia.com

OSG IBERICA

Bekolarra 4
E - 01010 Vitoria-Gasteiz - Spain
Tel: +34 945 242 400
Fax: +34 945 228 883
osg.iberica@osg-ib.com

RUSSIA

Butlerova street, 17B, office 5069
117342 Moscow - Russia
Tel: +7 (495) 150 41 54
info@osg-russia.com

OSG TURKEY

Rami Kışla Cad.No:56 Eyüp
Istanbul 34056 - Turkey
Tel:+90 212 565 24 00
Fax: +90 212 565 44 00
info@osg-turkey.com

ROMSAN INTERNATIONAL CO. SRL

Reprezentant Exclusiv OSG
25C, Bucuresti-Magurele Street
051431 Bucuresti - România
Tel: +40 21 322 07 47
Fax: +40 21 321 56 00
romsan.int@romsan.ro

AUSTRIA

Branch office of OSG GERMANY
Messestraße 11
A-6850 Dornbirn
Tel: +49 7161 6064-0
Fax: +49 7161 6064-444
info@osg-germany.de

OSG ITALIA

Via Ferrero, 65 A/B
I - 10098 Rivoli - Italy
Tel: +39 0117705211
Fax: +39 0117705215
info@osg-italia.it

Vischer & Bolli AG

Machining and Workholding
Im Schossacher 17
CH-8600 Dübendorf
T +41 44 802 15 15
F +41 44 802 15 95
info@vb-tools.com

OSG EUROPE LOGISTICS S.A.

01/2022 - All rights reserved. © OSG Europe 2022

The contents of this catalogue are provided to you for viewing only. They are not intended for reproduction either in part or in whole in this or other medium. They cannot be copied, used to create derivation work or used for any reason, by means without the express, written permission of the copyright owner. If prices are stated, they are netto unit-prices and any eventual tax(es) have to be added. The company is not responsible for any printing error in technical, price and/or any other data.

Tool specifications subject to change without notice.

www.osgeurope.com

